

MX GUARDIAN

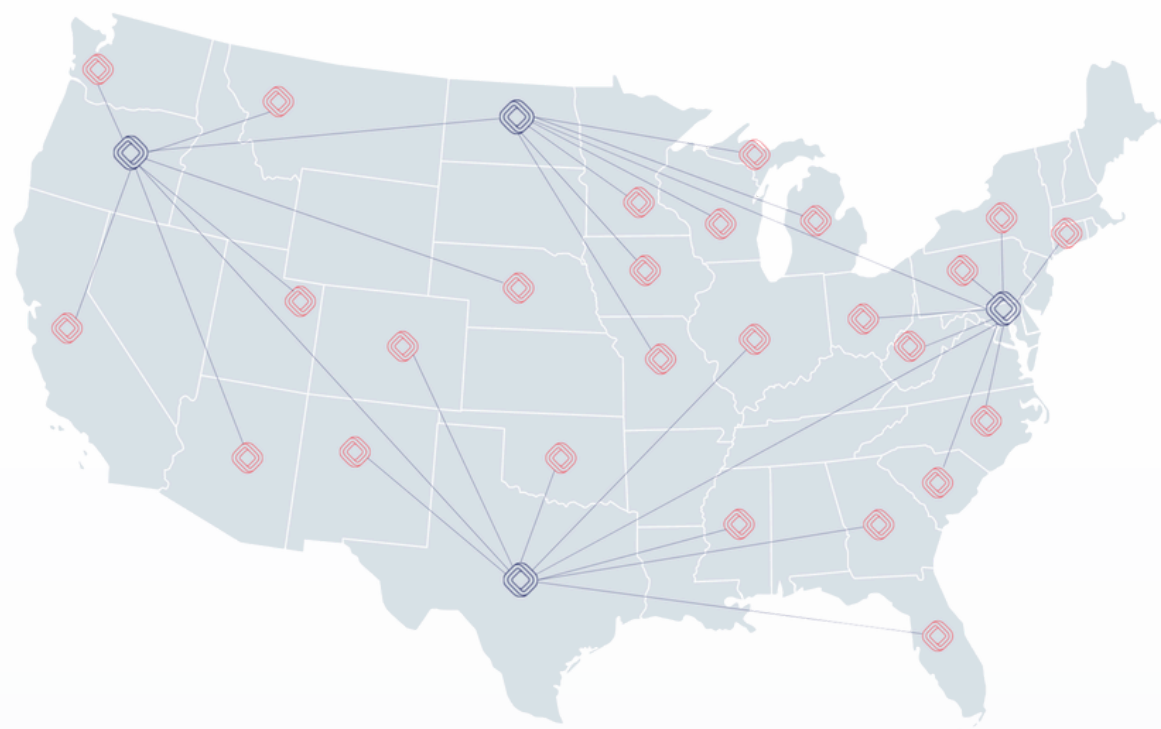


DEPLOYMENT

OVERVIEW

MX Guardian compiles essential data for rapid crime resolution. It seamlessly integrates a sophisticated cloud-based system with purpose built LPR cameras to gather comprehensive evidence from vehicles in any environment. Effortlessly sort through millions of records and pinpoint vehicles of interest using investigative leads and suspicious activity indicators. MX Guardian proactively alerts you upon detection of a hotlist vehicle, enabling prompt intervention.

INNOVATING CONNECTIVITY



1000+
cities covered by
Insight LPR

10B+
vehicle plate scans



WHY MX GUARDIAN?



MOBILE ACCESS

As a cloud-based solution, MX Guardian is accessible anywhere, anytime, allowing you to get the evidence you need so you can close cases quickly.



UNIFIED EXPERIENCE

Get the whole picture by combining fixed and mobile camera reads with surveillance footage, creating complete actionable evidence files.



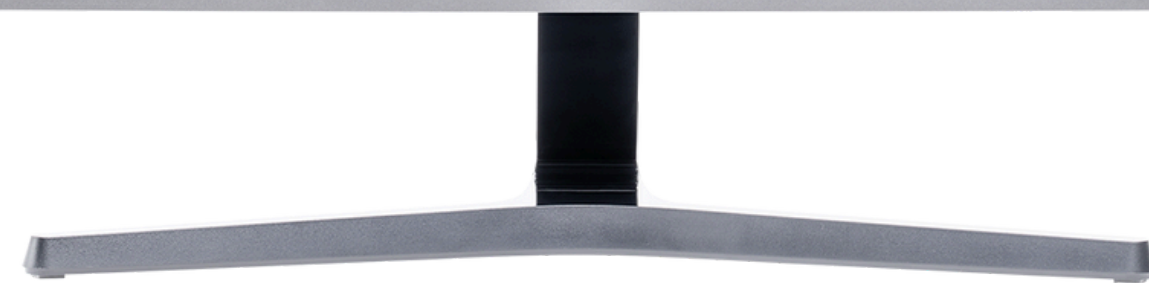
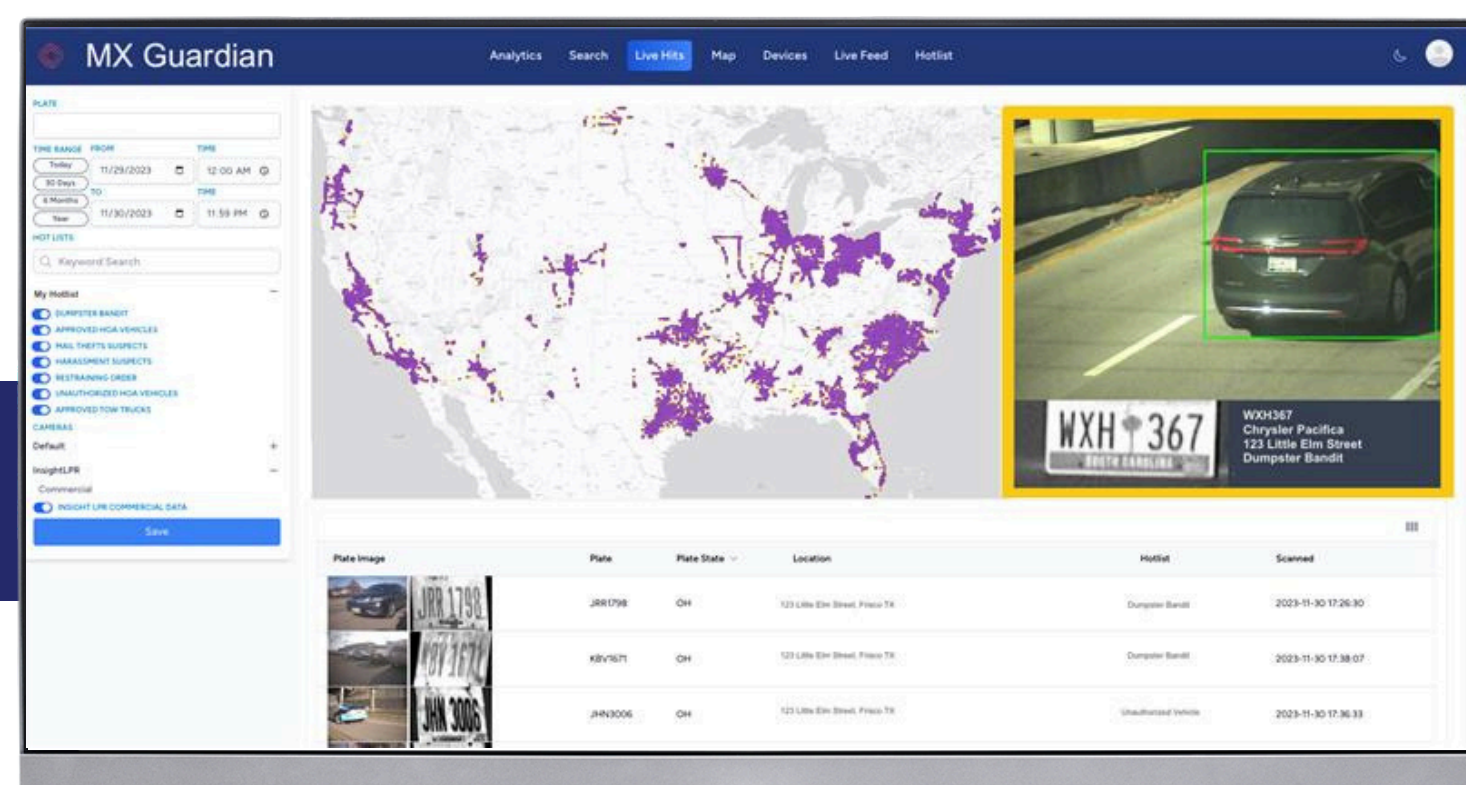
HIT ALERTING

Delivers alerts in less than 10 seconds via email or text, ensuring that users can quickly take action to detect and deter crime.



INVESTIGATIVE EDGE

With strong machine learning capabilities, new and historical vehicle-based evidence is easily managed by MX Guardian day and night, rain or shine.



SPECIFICATIONS

- Full Cloud Based Solution
- Live View Event Monitoring
- Camera Agnostic Integration
- Full & Partial Plate Search
- Make, Vehicle Type, Color Search, & State
- Email & Text Message-Based Alerting
- Hotlist Management
- In-App Real Time Notifications
- Unlimited Data Storage
- Unlimited Users
- Integration Ready

ACCESS INSIGHT LPR'S UNIQUE COMMERCIAL DATA